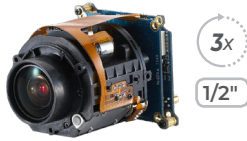


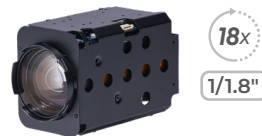
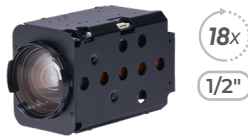
[www.wonwoo.com](http://www.wonwoo.com)

***WONWOO***  
**SECURITY**  
**SOLUTIONS**

# AF Zoom Module Series



	MC-S038B	MC-108 / 108B	MC-A108	MC-105	MC-105Q
Sensor/Resolution	1/2", 1080P	1/2.8", 1080P	1/2.8", 1080P	1/2.8", 1080P	1/2.8", 1440P
Lens	3x(f=3.6~10mm)	10x(f=5.1~51mm)	10x(f=5.1~51mm)	10x(f=4.7~47mm)	10x(f=4.7~47mm)
Day & Night	○	○	○	○	○
WDR	○	○	○	○	○
Video Output	HD-SDI, EX-SDI, TVI, CVBS	MC-108 : EX-SDI, LVDS, CVBS MC-108B : HD-SDI, EX-SDI, TVI, CVBS	HD-SDI, EX-SDI, AHD, CVBS	LVDS, CVBS	LVDS, CVBS
Power	DC 12V	DC 12V	DC 12V	DC 12V	DC 12V



	MC-S189	MC-S189Q	MC-S185U	MC-S187U	MC-209 / 209B
Sensor/Resolution	1/2", 1080P	1/1.8", 1440P	1/1.8", 2160P	1/1.8", 2160P	1/2.8", 1080P
Lens	18x(f=6.8~122.4mm)	18x(f=6.8~122.4mm)	18x(f=6.8~120mm)	18x(f=6.8~120mm)	20x(f=5.2~104mm)
Day & Night	○	○	○	○	○
WDR	○	○	○	○	○
Video Output	EX-SDI, LVDS, CVBS	EX-SDI, LVDS, CVBS	HDMI, CVBS	HDMI, CVBS	MC-209 : EX-SDI, LVDS, CVBS MC-209B : EX-SDI, CVBS
Power	DC 12V	DC 12V	DC 12V	DC 12V	DC 12V

# AF Zoom Module Series



30x



30x



30x

1/2"



30x

1/2"



30x

1/1.8"

	MC-308 / 308B	MC-A308	MC-S308 / S308B	MC-S309	MC-S309Q
Sensor/Resolution	1/2.8", 1080P	1/2.8", 1080P	1/2", 1080P	1/2", 1080P	1/1.8", 1440P
Lens	30x(f=4.6~136mm)	30x(f=4.6~136mm)	30x(f=6~180mm)	30x(f=6~180mm)	30x(f=6~180mm)
Day & Night	○	○	○	○	○
WDR	○	○	○	○	○
Video Output	MC-308 : EX-SDI, LVDS, CVBS MC-308B : HD-SDI, EX-SDI, TVI, CVBS	HD-SDI(Optional), EX-SDI(Optional), AHD, CVBS	MC-S308 : EX-SDI, LVDS, CVBS MC-S308B : HD-SDI, EX-SDI, TVI, CVBS	EX-SDI, LVDS, AHD, CVBS	EX-SDI, LVDS, CVBS
Power	DC 12V	DC 12V	DC 12V	DC 12V	DC 12V



36x

1/2"



36x

1/2"



36x

1/1.8"



36x

Pregius



36x

Pregius

	MC-S368 / S369	MC-S368B	MC-S369Q	MC-G365	MC-G365B
Sensor/Resolution	1/2", 1080P	1/2", 1080P	1/1.8", 1440P	1/2.3", 1080P Global Shutter	1/2.3", 1080P Global Shutter
Lens	36x(f=6~216mm)	36x(f=6~216mm)	36x(f=6~216mm)	36x(f=6~216mm)	36x(f=6~216mm)
Day & Night	○	○	○	○	○
WDR	○	○	○	○	○
Video Output	EX-SDI, LVDS, CVBS	HD-SDI, EX-SDI, TVI, CVBS	EX-SDI, LVDS, CVBS	EX-SDI, LVDS, CVBS	HD-SDI, EX-SDI, TVI, CVBS
Power	DC 12V	DC 12V	DC 12V	DC 12V	DC 12V

## AF Zoom Module Series



**MM-405 / 407**



**MM-405Q / 407Q**



**MM-H407Q**



**MM-S407Q / HS407Q**



**MM-555**

Sensor/Resolution	1/2.8", 1080P	1/2.8", 1440P	1/2.8", 1440P	1/1.8", 1440P	1/2.8", 1080P
Lens	40x(f=4.25~170mm)	40x(f=4.25~170mm)	40x(f=4.25~170mm)	40x(f=6.5~260mm)	55x(f=4.25~234mm)
Day & Night	○	○	○	○	○
WDR	○	○	○	○	○
Video Output	LVDS, CVBS	LVDS, CVBS	NETWORK, CVBS	MM-S407Q : LVDS, CVBS MM-HS407Q : NETWORK, CVBS	LVDS, CVBS
Power	DC 12V	DC 12V	DC 12V	DC 12V	DC 12V

## MB Series



**MB-18**



**MB-S18**



**MB-14U**



**MB-HG15/XG15**



**MB-108-USB**

Sensor/Resolution	1/3", 1080P	1/2", 1080P	1/2", 2160P	1/1.8", 1080P Global Shutter	1/3", 1080P
Lens	C/CS	C/CS	C/CS	C/CS	10x(f=5.1~51mm)
Day & Night	○	○	○	○	○
WDR	○	○	○	○	○
Video Output	HD-SDI, EX-SDI, CVBS	HD-SDI, EX-SDI, TVI, CVBS	HD-SDI, EX-SDI, CVBS	NETWORK, HD-SDI, EX-SDI, TVI, CVBS	USB 3.1
Power	DC 12V	DC 12V	DC 12V	DC 12V, PoE	DC 5V

# MB Series



3x  
1/1.8"  
Pregius

**MB-HG25 / XG25**



3x  
1/2"

**MB-S28 / S29**



3x  
1/1.8"

**MB-S29Q**



10x

**MB-108**



10x

**MB-X108**

Sensor/Resolution	1/1.8", 1080P Global Shutter	1/2", 1080P	1/1.8", 1440P	1/2.8", 1080P	1/2.8", 1080P
Lens	3x(f=3.6~10mm)	3x(f=3.6~10mm)	3x(f=3.6~10mm)	10x(f=5.1~51mm)	10x(f=5.1~51mm)
Day & Night	○	○	○	○	○
WDR	○	○	○	○	○
Video Output	NETWORK, HD-SDI, EX-SDI, TVI, CVBS	MB-S28 : HD-SDI, EX-SDI, AHD, CVBS MB-S29 : EX-SDI, CVBS	EX-SDI	HD-SDI, EX-SDI, TVI, CVBS	NETWORK, CVBS
Power	DC 12V, PoE	DC 12V	DC 12V	DC 12V	DC 12V



20x

**MB-208**



20x

**MB-A209**



20x

**MB-H208 / X208**



30x

**MB-308**



30x

**MB-A308**

Sensor/Resolution	1/2.8", 1080P	1/2.8", 1080P	1/2.8", 1080P	1/2.8", 1080P	1/2.8", 1080P
Lens	20x(f=5.2~104mm)	20x(f=5.2~104mm)	20x(f=5.2~104mm)	30x(f=4.6~136mm)	30x(f=4.6~136mm)
Day & Night	○	○	○	○	○
WDR	○	○	○	○	○
Video Output	EX-SDI, CVBS	AHD, TVI, CVBS	NETWORK, HD-SDI, CVBS	HD-SDI, EX-SDI, TVI, CVBS	AHD, CVBS
Power	DC 12V	DC 12V	DC 12V, PoE	DC 12V	DC 12V

## MB Series



30x



30x

1/2"



36x

1/2"



36x

1/2"



36x

Pregius

**MB-H308 / X308**

**MB-HS308 / XS308**

**MB-S368**

**MB-HS368 / XS368**

**MB-G365 / XG365**

Sensor/Resolution	1/2.8", 1080P	1/2", 1080P	1/2", 1080P	1/2", 1080P	1/2.3", 1080P Global Shutter
Lens	30x(f=4.6~136mm)	30x(f=6~180m)	36x(f=6~216m)	36x(f=6~216m)	36x(f=6~216mm)
Day & Night	○	○	○	○	○
WDR	○	○	○	○	○
Video Output	NETWORK, HD-SDI, CVBS	NETWORK, HD-SDI, CVBS	HD-SDI, EX-SDI, TVI, CVBS	NETWORK, HD-SDI, CVBS	MB-G365 : HD-SDI, EX-SDI, TVI, CVBS MB-XG365 : NETWORK, CVBS
Power	DC 12V, PoE	DC 12V, PoE	DC 12V	DC 12V, PoE	DC 12V

## MIR Series



3x

1/1.8"

Pregius



3x



3x



3x

1/2"



3x

1/2"

**MIR-HG25-B / XG25-B**

**MR-038**

**MR-H038 / X038**

**MR-S038**

**MR-HS038 / XS038**

Sensor/Resolution	1/1.8", 1080P Global Shutter	1/3", 1080P	1/3", 1080P	1/2", 1080P	1/2", 1080P
Lens	3x(f=12~40mm)	3x(f=3~9mm)	3x(f=3~9mm)	3x(f=3.6~10mm)	3x(f=3.6~10mm)
IR Distance	20m	100m	100m	100m	100m
In/Out Port	1 / 2	1 / 2	1 / 2	1 / 2	1 / 2
Ingress Protection	IP67	IP67, IK10	IP67, IK10	IP67, IK10	IP67, IK10
Video Output	NETWORK, CVBS	HD-SDI, EX-SDI, CVBS	NETWORK, CVBS	HD-SDI, EX-SDI, CVBS	NETWORK, CVBS
Power	DC 12V	DC 12V, AC 24V	DC 12V, AC 24V	DC 12V, AC 24V	DC 12V, AC 24V

## MR Series



	<b>MR-108</b>	<b>MR-H108 / X108</b>	<b>MR-HS128</b>	<b>MR-XS189</b>	<b>MR-208</b>
Sensor/Resolution	1/2.8", 1080P	1/2.8", 1080P	1/1.9", 1080P	1/2", 1080P	1/2.8", 1080P
Lens	10x(f=5.1~51mm)	10x(f=5.1~51mm)	12x(f=7~84mm)	18x(f=6.8~122.4mm)	20x(f=5.2~104mm)
IR Distance	100m	100m	100m	100m	100m
In/Out Port	1 / 2	1 / 2	1 / 2	1 / 2	1 / 2
Ingress Protection	IP67, IK10	IP67, IK10	IP67, IK10	IP67, IK10	IP67, IK10
Video Output	HD-SDI, EX-SDI, CVBS	NETWORK, CVBS	NETWORK, CVBS	NETWORK, CVBS	HD-SDI, EX-SDI, CVBS
Power	DC 12V, AC 24V	DC 12V, AC 24V	DC 12V, AC 24V	DC 12V, AC 24V	DC 12V, AC 24V

## WCK Series



	<b>MR-H208 / X208</b>	<b>MR-308</b>	<b>MR-H308 / X308</b>	<b>WCK-HS369 / FS369</b>	<b>WCK-HS369Q / FS369Q</b>
Sensor/Resolution	1/2.8", 1080P	1/2.8", 1080P	1/2.8", 1080P	1/2", 1080P	1/1.8", 1440P
Lens	20x(f=5.2~104mm)	30x(f=4.6~136mm)	30x(f=4.6~136mm)	36x(f=6~216mm)	36x(f=6~216mm)
IR Distance	100m	100m	100m	250m	250m
In/Out Port	1 / 2	1 / 2	1 / 2	1 / 0	1 / 0
Ingress Protection	IP67, IK10	IP67, IK10	IP67, IK10	IP66, IK10	IP66, IK10
Video Output	NETWORK, CVBS	HD-SDI, EX-SDI, CVBS	NETWORK, CVBS	NETWORK, CVBS	NETWORK, CVBS
Power	DC 12V, AC 24V, PoE+(Option)	DC 12V, AC 24V	DC 12V, AC 24V, PoE+(Option)	DC 12V ~ 24V, AC 24V	DC 12V ~ 24V, AC 24V

## WGK Series



**WGK-HS407 / HS407-RT**



**WGK-HS407Q / HS407Q-RT**



**WMK-M208**



**WMK-H208 / F208**



**WMK-M308**

Sensor/Resolution	1/1.8", 1080P	1/1.8", 1440P	1/2.8", 1080P	1/2.8", 1080P	1/2.8", 1080P
Lens	40x(f=6.5~260mm)	40x(f=6.5~260mm)	20x(f=5.2~104mm)	20x(f=5.2~104mm)	30x(f=4.6~136mm)
IR Distance	500m	500m	350m	350m	350m
In/Out Port	4 / 2	4 / 2	8 / 2	1 / 1	8 / 2
Ingress Protection	IP66, IK10	IP66, IK10	IP66, IK10	IP66, IK10	IP66, IK10
Video Output	NETWORK, CVBS	NETWORK, CVBS	HD-SDI, EX-SDI, CVBS	NETWORK, HD-SDI, EX-SDI, CVBS	HD-SDI, EX-SDI, CVBS
Power	AC 24V(Optional), HPOE(80W)	AC 24V(Optional), HPOE(80W)	AC 24V	AC 24V	AC 24V



**WMK-H308 / F308**



**WMK-S308 / S309**



**WMK-HS308 / FS308**



**WMK-HS309 / FS309**



**WMK-S368 / S369**

Sensor/Resolution	1/2.8", 1080P	1/2", 1080P	1/2", 1080P	1/2", 1080P	1/2", 1080P
Lens	30x(f=4.6~136mm)	30x(f=6~180mm)	30x(f=6~180mm)	30x(f=6~180mm)	36x(f=6~216mm)
IR Distance	350m	350m	350m	350m	350m
In/Out Port	1 / 1	8 / 2	1 / 1	1 / 1	8 / 2
Ingress Protection	IP66, IK10	IP66, IK10	IP66, IK10	IP66, IK10	IP66, IK10
Video Output	NETWORK, HD-SDI, EX-SDI, CVBS	WMK-S308 : HD-SDI, EX-SDI, CVBS WMK-S309 : EX-SDI, CVBS	NETWORK, HD-SDI, EX-SDI, CVBS	NETWORK, EX-SDI, CVBS	WMK-S368 : HD-SDI, EX-SDI, CVBS WMK-S369 : EX-SDI, CVBS
Power	AC 24V	AC 24V	AC 24V	AC 24V	AC 24V



## WMK Series



**WMK-HS368 / FS368**



**WMK-HS369 / FS369**



**WMK-HS369Q / FS369Q**



**WMK-HG365 / FG365**



**WRK-HS369 / HS369-RT**

	WMK-HS368 / FS368	WMK-HS369 / FS369	WMK-HS369Q / FS369Q	WMK-HG365 / FG365	WRK-HS369 / HS369-RT
Sensor/Resolution	1/2", 1080P	1/2", 1080P	1/1.8", 1440P	1/2.3", 1080P Global Shutter	1/2", 1080P
Lens	36x(f=6~216mm)	36x(f=6~216mm)	36x(f=6~216mm)	36x(f=6~216mm)	36x(f=6~216mm)
IR Distance	350m	350m	350m	350m	200m
In/Out Port	1 / 1	1 / 1	1 / 1	1 / 1	1 / 1
Ingress Protection	IP66, IK10	IP66, IK10	IP66, IK10	IP66, IK10	IP66, IK10
Video Output	NETWORK, HD-SDI, EX-SDI, CVBS	NETWORK, EX-SDI, CVBS	NETWORK, EX-SDI, CVBS	NETWORK, EX-SDI, CVBS	NETWORK, CVBS
Power	AC 24V	AC 24V	AC 24V	AC 24V	AC 24V

## MMK Series



**MMK-HS189 / FS189**



**MMK-HS189Q / FS189Q**



**MMK-M208**



**MMK-H208 / F208**



**WCA-M208 / H208**

	MMK-HS189 / FS189	MMK-HS189Q / FS189Q	MMK-M208	MMK-H208 / F208	WCA-M208 / H208
Sensor/Resolution	1/2", 1080P	1/1.8", 1440P	1/2.8", 1080P	1/2.8", 1080P	1/2.8", 1080P
Lens	18x(f=6.8~122.4mm)	18x(f=6.8~122.4mm)	20x(f=5.2~104mm)	20x(f=5.2~104mm)	20x(f=5.2~104mm)
IR Distance	150m	150m	150m	150m	120m
In/Out Port	1 / 1	1 / 1	4 / 2	1 / 1	2 / 0
Ingress Protection	IP66, IK10	IP66, IK10	IP66, IK10	IP66, IK10	-
Video Output	NETWORK, EX-SDI, CVBS	NETWORK, EX-SDI, CVBS	HD-SDI, EX-SDI, CVBS	NETWORK, HD-SDI, EX-SDI, CVBS	WCA-M208 : HD-SDI, CVBS WCA-H208 : NETWORK, CVBS
Power	AC 24V	AC 24V	AC 24V	AC 24V	DC 12V ~ 24V

## WCA Series

## TSF Series



	<b>TSF-M208</b>	<b>TSF-H208</b>	<b>TSF-M308</b>	<b>TSF-H308</b>	<b>TSO-M208</b>
Sensor/Resolution	1/2.8", 1080P	1/2.8", 1080P	1/2.8", 1080P	1/2.8", 1080P	1/2.8", 1080P
Lens	20x(f=5.2~104mm)	20x(f=5.2~104mm)	30x(f=4.6~136mm)	30x(f=4.6~136mm)	20x(f=5.2~104mm)
IR Distance	-	-	-	-	-
In/Out Port	4 / 1	4 / 1	4 / 1	4 / 1	8 / 2
Ingress Protection	-	-	-	-	IP66
Video Output	HD-SDI	NETWORK, HD-SDI	HD-SDI	NETWORK, HD-SDI	HD-SDI, CVBS
Power	DC 15V ~ 26V, AC 24V	DC 15V ~ 26V, AC 24V	DC 15V ~ 26V, AC 24V	DC 15V ~ 26V, AC 24V	AC 21V ~ 26V

## TSO Series

## PSO/PS Series



	<b>TSO-H208</b>	<b>TSO-M308</b>	<b>TSO-H308</b>	<b>PSO-M108 / PSO-M108</b>	<b>PS-H108 / PSO-H108</b>
Sensor/Resolution	1/2.8", 1080P	1/2.8", 1080P	1/2.8", 1080P	1/2.8", 1080P	1/2.8", 1080P
Lens	20x(f=5.2~104mm)	30x(f=4.6~136mm)	30x(f=4.6~136mm)	10x(f=5.1~51mm)	10x(f=5.1~51mm)
IR Distance	-	-	-	-	-
In/Out Port	8 / 2	8 / 2	8 / 2	2 / 2	2 / 2
Ingress Protection	IP66	IP66	IP66	PSO-M108 : IP66, IK10 / PS-M108 : IK10	PSO-H108 : IP66, IK10 / PS-H108 : IK10
Video Output	NETWORK, HD-SDI, CVBS	HD-SDI, CVBSI	NETWORK, HD-SDI, CVBS	HD-SDI	NETWORK, HD-SDI
Power	AC 21V ~ 26V	AC 21V ~ 26V	AC 21V ~ 26V	DC 12V	DC 12V, PoE+

## PSF Series



**PSF-H108**

Sensor/Resolution	1/2.8", 1080P
Lens	10x(f=5.1~51mm)
IR Distance	-
In/Out Port	2 / 2
Ingress Protection	IK10
Video Output	NETWORK, HD-SDI
Power	DC 12V, PoE+

## WTK Series



**WTK-M208**

Sensor/Resolution	1/2.8", 1080P
Lens	20x(f=5.2~104mm)
IR Distance	250m
In/Out Port	1 / 0
Ingress Protection	IP66, IK10
Video Output	HD-SDI, CVBS
Power	DC 24V ~ 32V



**WTK-H208 / F208**

Sensor/Resolution	1/2.8", 1080P
Lens	20x(f=5.2~104mm)
IR Distance	250m
In/Out Port	1 / 0
Ingress Protection	IP66, IK10
Video Output	NETWORK, HD-SDI, CVBS
Power	DC 24V ~ 32V



**WTK-M308**

Sensor/Resolution	1/2.8", 1080P
Lens	30x(f=4.6~136mm)
IR Distance	250m
In/Out Port	1 / 0
Ingress Protection	IP66, IK10
Video Output	HD-SDI, CVBS
Power	DC 24V ~ 32V



**WTK-H308 / F308**

Sensor/Resolution	1/2.8", 1080P
Lens	30x(f=4.6~136mm)
IR Distance	250m
In/Out Port	1 / 0
Ingress Protection	IP66, IK10
Video Output	NETWORK, HD-SDI, CVBS
Power	DC 24V ~ 32V



**WTK-S308**

Sensor/Resolution	1/2", 1080P
Lens	30x(f=6~180mm)
IR Distance	250m
In/Out Port	1 / 0
Ingress Protection	IP66, IK10
Video Output	HD-SDI, CVBS
Power	DC 24V ~ 32V



**WTK-H308T / F308T**

Sensor/Resolution	1/2.8", 1080P Thermal(640x480)
Lens	30x(f=4.6~136mm)
IR Distance	250m
In/Out Port	1 / 0
Ingress Protection	IP66, IK10
Video Output	NETWORK, CVBS
Power	DC 24V ~ 32V



**WTK-HS308 / FS308**

Sensor/Resolution	1/2", 1080P
Lens	30x(f=6~180mm)
IR Distance	250m
In/Out Port	1 / 0
Ingress Protection	IP66, IK10
Video Output	NETWORK, HD-SDI, CVBS
Power	DC 24V ~ 32V



**WTK-HS309 / FS309**

Sensor/Resolution	1/2", 1080P
Lens	30x(f=6~180mm)
IR Distance	250m
In/Out Port	1 / 0
Ingress Protection	IP66, IK10
Video Output	NETWORK, CVBS
Power	DC 24V ~ 32V



**WTK-S368**

Sensor/Resolution	1/2", 1080P
Lens	36x(f=6~216mm)
IR Distance	250m
In/Out Port	1 / 0
Ingress Protection	IP66, IK10
Video Output	HD-SDI, CVBS
Power	DC 24V ~ 32V

## WTK Series



36x  
1/2"



36x  
1/2"



36x  
1/1.8"



3x  
1/2"



3x  
1/1.8"

	WTK-HS368 / FS368	WTK-HS369 / FS369	WTK-FS369Q	IBZ-S29-04	IBZ-S29Q-04
Sensor/Resolution	1/2", 1080P	1/2", 1080P	1/1.8", 1440P	1/2", 1080P	1/1.8", 1440P
Lens	36x(f=6~216mm)	36x(f=6~216mm)	36x(f=6~216mm)	3x(f=3.6~10mm)	3x(f=3.6~10mm)
IR Distance	250m	250m	250m	50m	50m
In/Out Port	1 / 0	1 / 0	1 / 0	-	-
Ingress Protection	IP66, IK10	IP66, IK10	IP66, IK10	IP67, IK10	IP67, IK10
Video Output	NETWORK, HD-SDI, CVBS	NETWORK, CVBS	NETWORK, CVBS	EX-SDI, CVBS	EX-SDI
Power	DC 24V ~ 32V	DC 24V ~ 32V	DC 24V ~ 32V	DC 12V	DC 12V



3x  
1/2"



4x



4x



4x  
1/2"



4x

	IBZ-HS273(A)-04	IBZ-H273(A)-04	IBZ-H276-04	IBZ-HS276-04	IBZ-H276F-04
Sensor/Resolution	1/2", 1080P	1/2.8", 1080P	1/2.8", 1080P	1/2", 1080P	1/2.8", 5MP
Lens	3x(f=3.6~11mm)	4x(f=2.8~12mm)	4x(f=2.8~12mm), P-Iris	4x(f=2.8~12mm), P-Iris	4x(f=2.8~12mm), P-Iris
IR Distance	50m	50m	50m	50m	50m
In/Out Port	1 / 1	1 / 1	1 / 1	1 / 1	1 / 1
Ingress Protection	IP67, IK10	IP67, IK10	IP67, IK10	IP67, IK10	IP67, IK10
Video Output	NETWORK, CVBS	NETWORK, CVBS	NETWORK, CVBS	NETWORK, CVBS	NETWORK, CVBS
Power	DC 12V, PoE	DC 12V, PoE	DC 12V, PoE	DC 12V, PoE	DC 12V, PoE

## IBZ Series



	<b>IBZ-HS276F-04</b>	<b>IBZ-H105-04 / X105-04</b>	<b>IBZ-H105Q-04 / X105Q-04</b>	<b>IBZ-HS189-12 / XS189-12</b>	<b>IBZ-HS189Q-12 / XS189Q-12</b>
Sensor/Resolution	1/1.8", 5MP	1/2.8", 1080P	1/2.8", 1440P	1/2", 1080P	1/1.8", 1440P
Lens	4x(f=2.8~12mm), P-Iris	10x(f=4.7~47mm)	10x(f=4.7~47mm)	18x(f=6.8~122.4mm)	18x(f=6.8~122.4mm)
IR Distance	50m	50m	50m	100m	100m
In/Out Port	1 / 1	1 / 1	1 / 1	1 / 1	1 / 1
Ingress Protection	IP67, IK10	IP67, IK10	IP67, IK10	IP67, IK10	IP67, IK10
Video Output	NETWORK, CVBS	NETWORK, CVBS	NETWORK, CVBS	NETWORK, CVBS	NETWORK, CVBS
Power	DC 12V, PoE	DC 12V, PoE	DC 12V, PoE	DC 12V, PoE+	DC 12V, PoE+

## MP Series



	<b>MP-038 / 038-22</b>	<b>MP-11-04</b>	<b>MP-S29-04</b>	<b>MP-S29Q-04</b>	<b>MP-HS273(A)-04</b>
Sensor/Resolution	1/3", 1080P	1/2.9", 1080P	1/2", 1080P	1/1.8", 1440P	1/2", 1080P
Lens	3x(f=3~9mm)	4x(f=2.8~12mm)	3x(f=3.6~10mm)	3x(f=3.6~10mm)	3x(f=3.6~10mm)
IR Distance	- / 18m	15m	15m	15m	15m
In/Out Port	-	-	-	-	1 / 1
Ingress Protection	-	-	-	-	-
Video Output	HD-SDI, EX-SDI, TVI(Optional), CVBS	HD-SDI, EX-SDI, CVBS	EX-SDI, CVBS	EX-SDI	NETWORK, CVBS
Power	DC 12V	DC 12V	DC 12V	DC 12V	DC 12V, PoE

## MP Series



	<b>MP-H273(A)-04</b>	<b>MP-H276-04</b>	<b>MP-HS276-04</b>	<b>MP-H276F-04</b>	<b>MP-HS276F-04</b>
Sensor/Resolution	1/2.8", 1080P	1/2.8", 1080P	1/2", 1080P	1/2.8", 5MP	1/1.8", 5MP
Lens	4x(f=2.8~12mm)	4x(f=2.8~12mm), P-Iris	4x(f=2.8~12mm), P-Iris	4x(f=2.8~12mm), P-Iris	4x(f=2.8~12mm), P-Iris
IR Distance	15m	15m	15m	15m	15m
In/Out Port	1 / 1	1 / 1	1 / 1	1 / 1	1 / 1
Ingress Protection	-	-	-	-	-
Video Output	NETWORK, CVBS	NETWORK, CVBS	NETWORK, CVBS	NETWORK, CVBS	NETWORK, CVBS
Power	DC 12V, PoE	DC 12V, PoE	DC 12V, PoE	DC 12V, PoE	DC 12V, PoE

## MV Series



	<b>MV-038 / 038-22</b>	<b>MV-11-04</b>	<b>MV-S29-04</b>	<b>MV-S29Q-04</b>	<b>MV-HS273(A)-04</b>
Sensor/Resolution	1/3", 1080P	1/2.9", 1080P	1/2", 1080P	1/1.8", 1440P	1/2", 1080P
Lens	3x(f=3~9mm)	4x(f=2.8~12mm)	3x(f=3.6~10mm)	3x(f=3.6~10mm)	3x(f=3.6~11mm)
IR Distance	- / 18m	15m	15m	15m	15m
In/Out Port	-	-	-	-	1 / 1
Ingress Protection	IP66, IK10	IP66, IK10	IP66, IK10	IP66, IK10	IP66, IK10
Video Output	HD-SDI, EX-SDI, TVI(Optional), CVBS	HD-SDI, EX-SDI, CVBS	EX-SDI, CVBS	EX-SDI	NETWORK, CVBS
Power	DC 12V	DC 12V	DC 12V	DC 12V	DC 12V, PoE

## MV Series



**MV-H273(A)-04**



**MV-H276-04**



**MV-HS276-04**



**MV-H276F-04**



**MV-HS276F-04**

Sensor/Resolution	1/2.8", 1080P	1/2.8", 1080P	1/2", 1080P	1/2.8", 5MP	1/1.8", 5MP
Lens	4x(f=2.8~12mm)	4x(f=2.8~12mm), P-Iris	4x(f=2.8~12mm), P-Iris	4x(f=2.8~12mm), P-Iris	4x(f=2.8~12mm), P-Iris
IR Distance	15m	15m	15m	15m	15m
In/Out Port	1 / 1	1 / 1	1 / 1	1 / 1	1 / 1
Ingress Protection	IP66, IK10	IP66, IK10	IP66, IK10	IP66, IK10	IP66, IK10
Video Output	NETWORK, CVBS	NETWORK, CVBS	NETWORK, CVBS	NETWORK, CVBS	NETWORK, CVBS
Power	DC 12V, PoE	DC 12V, PoE	DC 12V, PoE	DC 12V, PoE	DC 12V, PoE

## EZB Series



**EZB-M28 / M108**



**EZB-H105**



**EZB-H105Q**



**EZB-H273**



**EZB-HS273**

Sensor/Resolution	1/2.8", 1080P	1/2.8", 1080P	1/2.8", 1440P	1/2.8", 1080P	1/2", 1080P
Lens	4x(f=2.8~12mm) / 10x(f=5.1~51mm)	10x(f=4.7~47mm)	10x(f=4.7~47mm)	4x(f=2.8~12mm)	3x(f=3.6~11mm)
IR Distance	-	-	-	-	-
In/Out Port	-	1 / 1	1 / 1	1 / 1	1 / 1
Certification	IECEX, ATEX, KCs, JPEx	IECEX, ATEX, KCs, JPEx	IECEX, ATEX, KCs, JPEx	IECEX, ATEX, KCs, JPEx	IECEX, ATEX, KCs, JPEx
Video Output	HD-SDI, EX-SDI, CVBS	NETWORK	NETWORK	NETWORK	NETWORK
Power	DC 12V, POC 48V	DC 12V, PoE+	DC 12V, PoE+	DC 12V, PoE+	DC 12V, PoE+

## EXF Series



20x

**EXF-M208**



20x

**EXF-H208**



30x

**EXF-M308**



30x

**EXF-H308**

Sensor/Resolution	1/2.8", 1080P	1/2.8", 1080P	1/2.8", 1080P	1/2.8", 1080P
Lens	20x(f=5.2~104mm)	20x(f=5.2~104mm)	30x(f=4.6~136mm)	30x(f=4.6~136mm)
IR Distance	-	-	-	-
In/Out Port	2 / 2	2 / 2	2 / 2	2 / 2
Certification	KCs, ATEX	KCs, ATEX	KCs, ATEX	KCs, ATEX
Video Output	HD-SDI, CVBS	NETWORK, CVBS	HD-SDI, CVBS	NETWORK, CVBS
Power	AC 24V	AC 24V	AC 24V	AC 24V

## EZP Series



40x

**EZP-M405 / H405**



40x

**EZP-M405-30 / H405-30**



40x

**EZP-H405Q**



40x

**EZP-H405Q-30**

Sensor/Resolution	1/2.8", 1080P	1/2.8", 1080P	1/2.8", 1440P	1/2.8", 1440P
Lens	40x(f=4.25~170mm)	40x(f=4.25~170mm)	40x(f=4.25~170mm)	40x(f=4.25~170mm)
IR Distance	-	200m	-	200m
In/Out Port	EZP-M405 : 2 / 2 EZP-H405 : 1 / 1	EZP-M405-30 : 2 / 2 EZP-H405-30 : 1 / 1	1 / 1	1 / 1
Certification	IECEX, ATEX, KCs	IECEX, ATEX, KCs	IECEX, ATEX, KCs	IECEX, ATEX, KCs
Video Output	EZP-M405 : HD-SDI, CVBS EZP-H405 : NETWORK	EZP-M405-30 : HD-SDI, CVBS EZP-H405-30 : NETWORK	NETWORK	NETWORK
Power	AC 24V	AC 24V	AC 24V	AC 24V





## WONWOO Engineering Co., Ltd.

### OFFICE IN KOREA

81, Magokjungang 6-ro,  
Gangseo-gu, Seoul, Korea

**T** 02 3665 3200

**F** 02 3665 3210

**E** sales@wonwoo.com

**W** www.wonwoo.com

### OFFICE IN USA

590 W. Central Ave., Suite E,  
Brea, CA 92821, USA

**T** 1 714 987 3636

**F** 1 714 509 1658

**E** sales@wonwoousa.com

### OFFICE IN CHINA

6th Floor, P Zone East, Baisha Logistics  
Center, No.3011 Shahe West St.,  
Nanshan Dist., ShenZhen, China

**T** 86 755 6182 8366

**F** 86 755 6182 8216

**E** ih.moon@wonwoo.com